

# WYRKSHOP MOBILE MAKERSPACE

## SELF-AWARENESS: TOILETRY BAG



ESTIMATED TIME: 1 HOUR

### LEARNING OBJECTIVES

- Demonstrate empathy and compassion for others
- Encourage others to see things from another perspective
- Develop respect for others
- Ignite a sense of social responsibility through giving

### LESSON PLAN VIDEO:

<https://youtu.be/HUzsUzNg6FM>  
or scan this

### LIFE SKILLS LEARNED:



LEVEL: 1



### MATERIALS NEEDED:



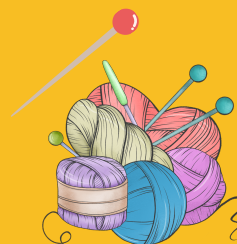
One 7" zipper



1 Yard of Fabric



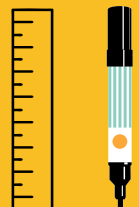
Sewing Scissors



Yarn and  
sewing Pins



Sewing machine

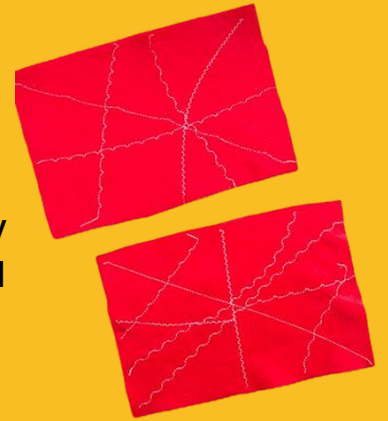


Acrylic Ruler and  
Fabric Marker

# OUTLINE OF ACTIVITY

## STEP 1

Measure out 21" length and mark with a fabric marker. Now measure out 14" width wide and mark. Now make a dotted line with a sewing straight edge and cut out your fabric pieces . If you would like to create a design on these pieces with your sewing machine, do so now.



## STEP 2



Did you know fabric has a "wrong" side and a "right side". Well it does! The wrong side of fabric is usually the side that the pattern isn't as distinguishable or the color isn't as vibrant.

With that in mind, lay the zipper side down next to the wrong side of one of the fabric pieces. Pin and stitch straight down. Make sure when you get to the part where the zipper is that you unzip it so it's not bulky and hard to sew around.

\*Check out this zipper tutorial for more information on working with zippers.

<https://youtu.be/oHDDhUzIXPY>

## STEP 3

Repeat what you did on step 2 with the other piece of fabric, attaching it to the other side of the zipper.



## STEP 4

Turn the bag so that it is inside out and the zipper is facing inwards, like the picture and pin. Sew a straight stitch around the edges leaving a ¼" seam allowance.



## STEP 5



Trim the edges of excess fabric and clip the corners with scissors, making sure to not cut through the stitches.

## STEP 6

Now the fun part. Reverse the fabric and you should have a zipper pouch!



## HOW DOES THE FINAL PRODUCT LOOK?

